



One Health
Student Conference
USAMV București



Creating Opportunities

CASSAVA PRODUCTION

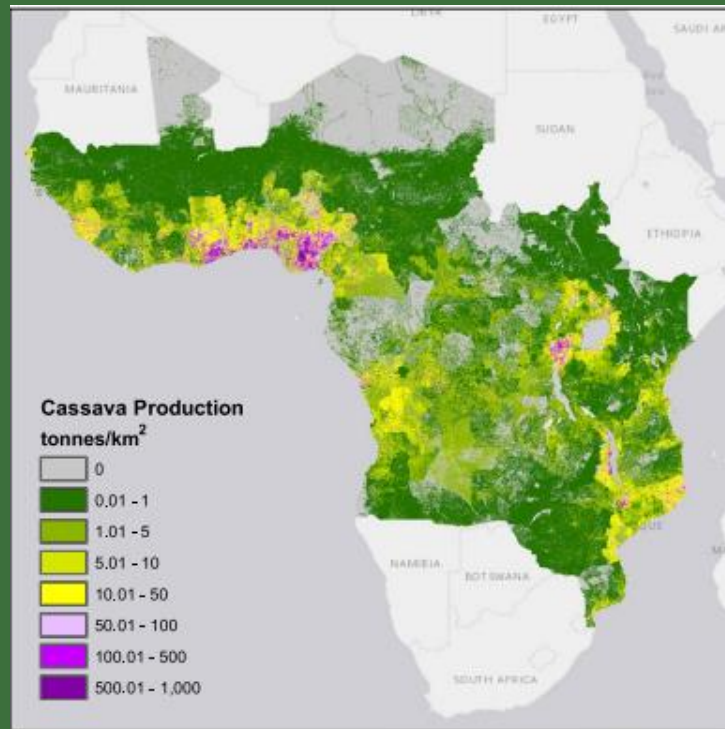


Figure 1: Cassava production quantities in Sub-Saharan Africa (Szyniszewska, 2020)



INTERACTIVE EFFECTS OF ENVIRONMENT, CULTIVAR, SIZE OF CUTTING, HORMONE APPLICATION, AND GROWING MEDIA ON SPROUTING AND ROOTING OF CASSAVA CULTIVARS

Moses TIMANA, Nicholus MNYAMBO, Lerato KGOTSE & Zakheleni DUBE

MATERIALS AND METHODS

1

CULTIVAR

Mbonisweni
Mganduzweni



2

SIZE

Small
Medium
Large



3

MEDIA

Peat
Loamy-soil



4

ENVIRONMENT

Inside laboratory
Outside laboratory



5

PRIMING

IBA hormone
No hormone



RESULTS



RESULTS

Table 1: Spearman rank correlations between measured plant variables and the five factors.

Factors	Number of leaves	Sprout number	Sprout length	Stem diameter	Shoot mass	Number of roots	Root length	Root mass
Environment	-0.0501 ^{ns}	0.2084**	0.3725**	0.1065 ^{ns}	0.2286**	-0.0117 ^{ns}	0.0448 ^{ns}	0.0789 ^{ns}
Cultivar	0.3841**	0.2510**	0.4847**	0.4098**	0.4498**	-0.0130 ^{ns}	-0.1388*	-0.0025 ^{ns}
Media	0.1920**	0.1806**	0.1116 ^{ns}	0.1597*	0.1515*	0.1360*	0.3035**	0.1690**
Priming	0.0170 ^{ns}	-0.0945 ^{ns}	-0.0565 ^{ns}	-0.0352 ^{ns}	-0.004 ^{ns}	0.4393**	0.2974**	0.3835**
Size	-0.0187 ^{ns}	0.0963 ^{ns}	0.0259 ^{ns}	0.0986 ^{ns}	0.1036 ^{ns}	0.1890**	0.0436 ^{ns}	0.1978**

^{ns} not significant ($P > 0.05$); *Significant ($P \leq 0.05$); **Highly significant ($P < 0.01$).

DISCUSSION

Zheng *et al.* (2019) on strawberry cuttings

Contradicting findings Mesen *et al.* (2001)

Thank you for your attention!

Name SURNAME of corresponding author

Mobil: + 27713354134

E-mail: 201626276@ump.ac.za

Address: Cnr R40 and D725 roads, Riverside,
Mbombela, 1200, South
Africa



UNIVERSITY OF
MPUMALANGA

Creating Opportunities

December 3-6, 2023, București



One Health
Student Conference
USAMV București