



One Health
Student Conference
USAMV București



One Health operational tools

Mathieu Birba; Ritienne Vella

December 3-6, 2023, București

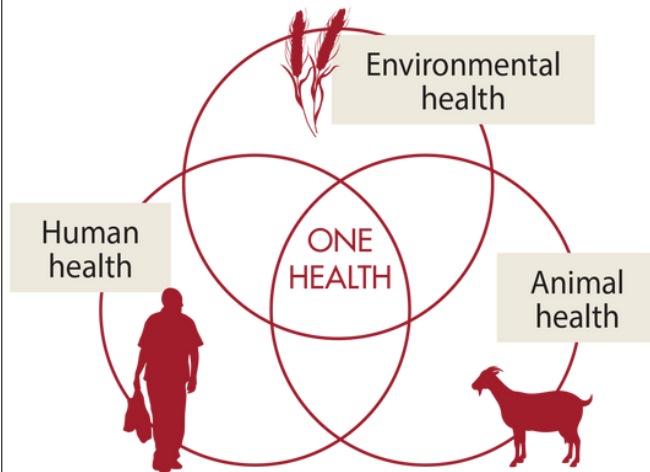


Introduction

One Health...

Recognizes :

- Health of humans,
- Domestic and wild animals, plants,
- the wider environment (including ecosystems)



Previously the tripartite :

- 1 the Food and Agriculture Organization (FAO) of the UN
- 2 World Health Organization (WHO)
- 3 World Organisation for Animal Health (WOAH)

Became the Quadripartite :

- 4 United Nations Environment Programme (UNEP) in 2022



Materials and methods

To address zoonotic and other health threats at human–animal–environment interface...

The quadripartite has developed a set of operational tools :

1st tool

Multisectoral Coordination Mechanisms Operational Tool
(MCM OT)

Multisectoral Coordination Mechanisms Operational Tool
An operational tool of the European Commission

2nd tool

Surveillance and Information Sharing Operational Tool
(SIS OT)

Surveillance and Information Sharing Operational Tool
An operational tool of the European Commission

3rd tool

Joint Risk Assessment Operational Tool
(JRA OT)

Joint Risk Assessment Operational Tool (JRA OT)
An operational tool of the European Commission

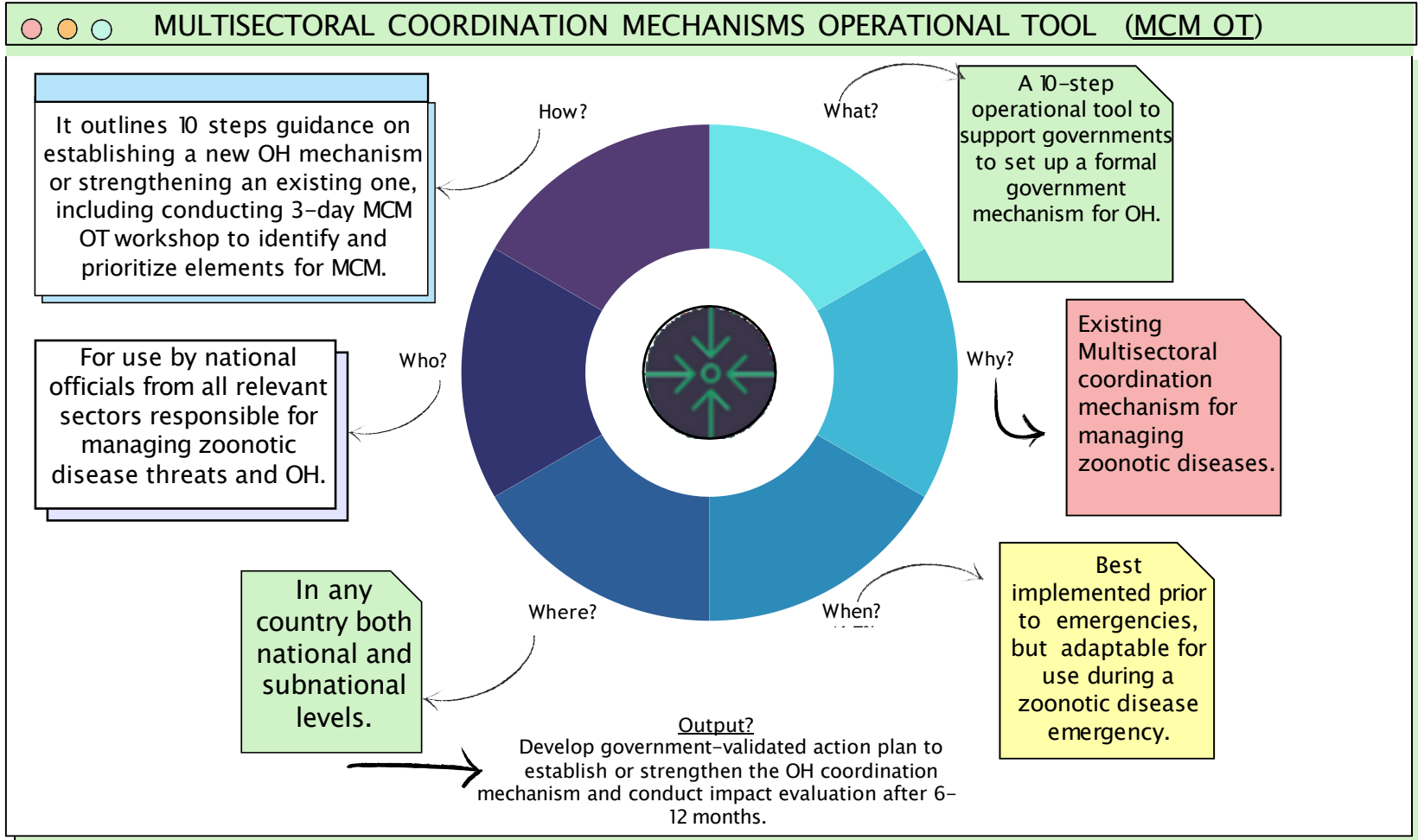
4th tool

Response and Preparedness Workshop methodology
(REPREP)

REPREP
Response and Preparedness Workshop methodology
An operational tool of the European Commission



Results and discussions





Results and discussions

By planning team PRIOR to WS

- 1 Convene a steering committee and appoint a planning team
- 2 Plan to use in a 3-day workshop
- 3 Gather background and draft the scope of the One Health mechanism
- 4 Select and prioritize elements for the action plan development

10 Steps ...



By multisectorial participants DURING WS

- 5 Plan for the future One Health mechanism
- 6 Assess elements and develop an action plan
- 7 Contextualize next steps for implementation
- 8 Validate the action plan

By multisectorial participants AFTER WS

- 9 Create a final report
- 1 Conduct an impact evaluation





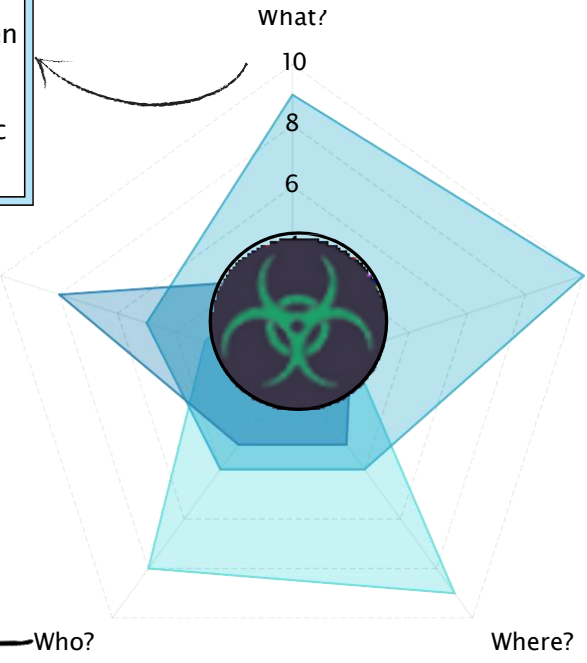
Results and discussions

Surveillance and Information Sharing Operational Tool (SIS OT)

An assessment tool to support countries to establish/strengthen their capacity for coordinated surveillance and cross-sectoral information sharing for zoonotic diseases.

Includes a stepwise assessment to evaluate the existing capacity and develop a national action plan.

For use by national officials from all relevant sectors responsible for managing zoonotic disease threats & OH.



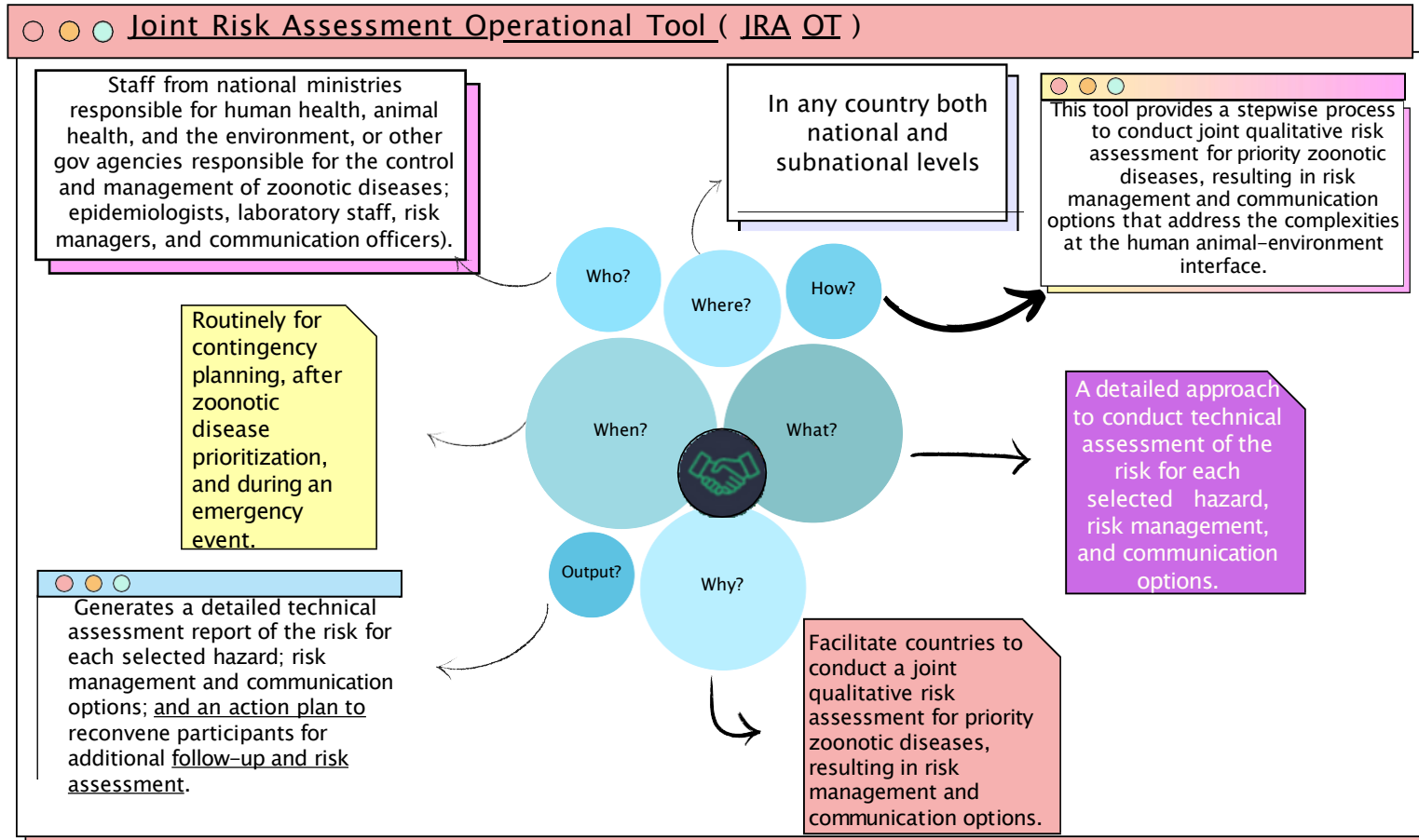
Establish an integrated surveillance & information sharing systems for monitoring & responding to zoonotic diseases threats.

Can be used at both national and subnational levels across the spectrum of surveillance capabilities.

Output?
A joint action plan to strengthen the national coordinated surveillance with a prioritized list of surveillance and cross-sector information-sharing activities with timelines. To support development of national action plan for health security.



Results and discussions





Results and discussions

Let's learn some terminology!

What is the likelihood and impact of...	
WHAT	hazard and event (as agreed during risk framing)
WHERE	population and location
WHEN	time frame
HOW	source (may be refined/decided/finalized later, after discussing the risk pathways)

Risk - the probability of occurrence of the consequences of an event that -ve affects animal/human health & biological and economic terms.

Risk assessment - Process of collecting, evaluating & documenting info to estimate risk level for a specific time & location. A level of uncertainty exists.



RISK ASSESSMENT CAN BE
QUANTITATIVE & QUALITATIVE

In quantitative :

likelihood, impact & uncertainty → expressed through **numbers**.

In qualitative :

likelihood, impact & uncertainty → expressed via descriptive sets of **categories** - with clear meaning defined for each.

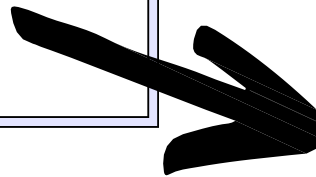




Results and discussions

So Joint Risk Assessment includes :

Discussion on communication needs (risk analysis), risk management options & provides recommendations.

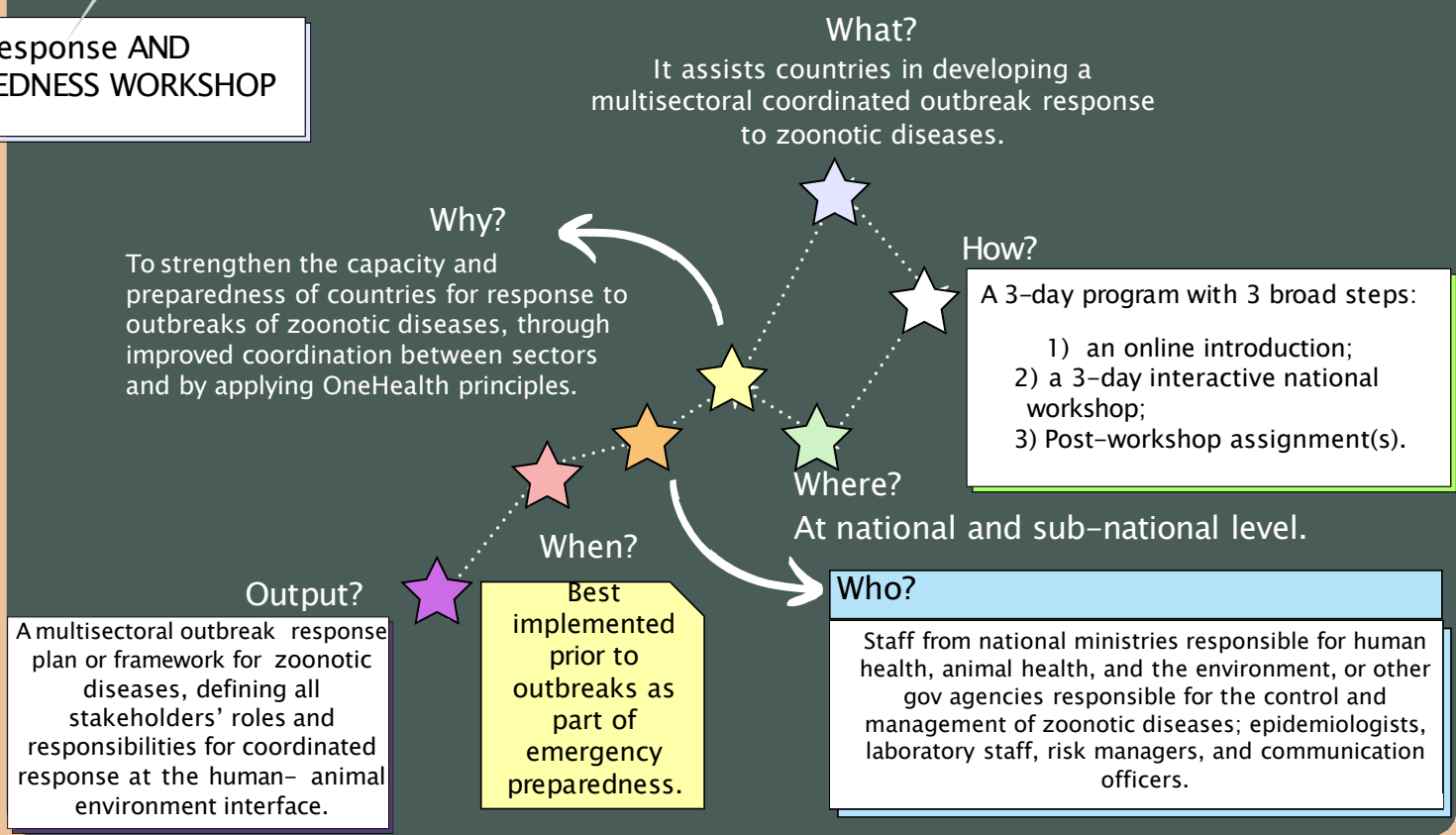


This allows decision makers to build & implement science-based risk management measures & communication messages aligned between sectors or implemented jointly.



Results and discussions

Response AND PREPAREDNESS WORKSHOP





Conclusions and recommendations

CONCLUSION



The mentioned tools are meant to be used for assessing and prioritizing of health threats & risks, and to facilitate & guide multi-sectoral collaboration and coordination.





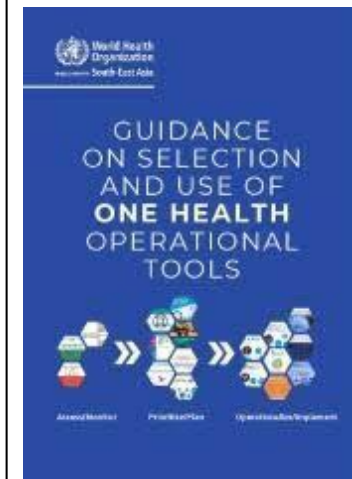
REFERENCES



- 1 Asia, S. R. O. F. T. S. E. (2024, June 7). *Guidance on selection and use of one health operational tools*.
<https://www.who.int/publications/i/item/9789290211426>
- 2 Control of Neglected Tropical Diseases (NTD). (2021, March 9). *Joint risk assessment operational tool (JRA OT): an operational tool of the tripartite zoonoses guide: taking a multisectoral, one health approach: a tripartite guide to addressing zoonotic diseases in countries*.
<https://www.who.int/publications/i/item/9789240015142>
- 3 OOHLEP *inventory of One Health tools and resources*. (n.d.).
<https://www.who.int/publications/m/item/ohhlepe-inventory-of-one-health-tools>



I advise reading:



Thank you for your attention!

Mathieu BIRBA

Mobil: +40 770926543

E-mail: mathieu.birba@laposte.net

Adress : Universitatea de Științe Agronomice și
Medicină Veterinară, Splaiul Independenței 105,
București 050097



December 3-6, 2023, București



One Health
Student Conference
USAMV București